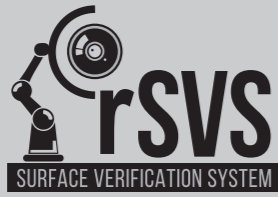


ABOUT AUTIS

AUTIS' industry-leading product portfolio includes:



DEFECT DETECTION AND CLASSIFICATION



ROBOTIC DEFECT DETECTION AND CLASSIFICATION

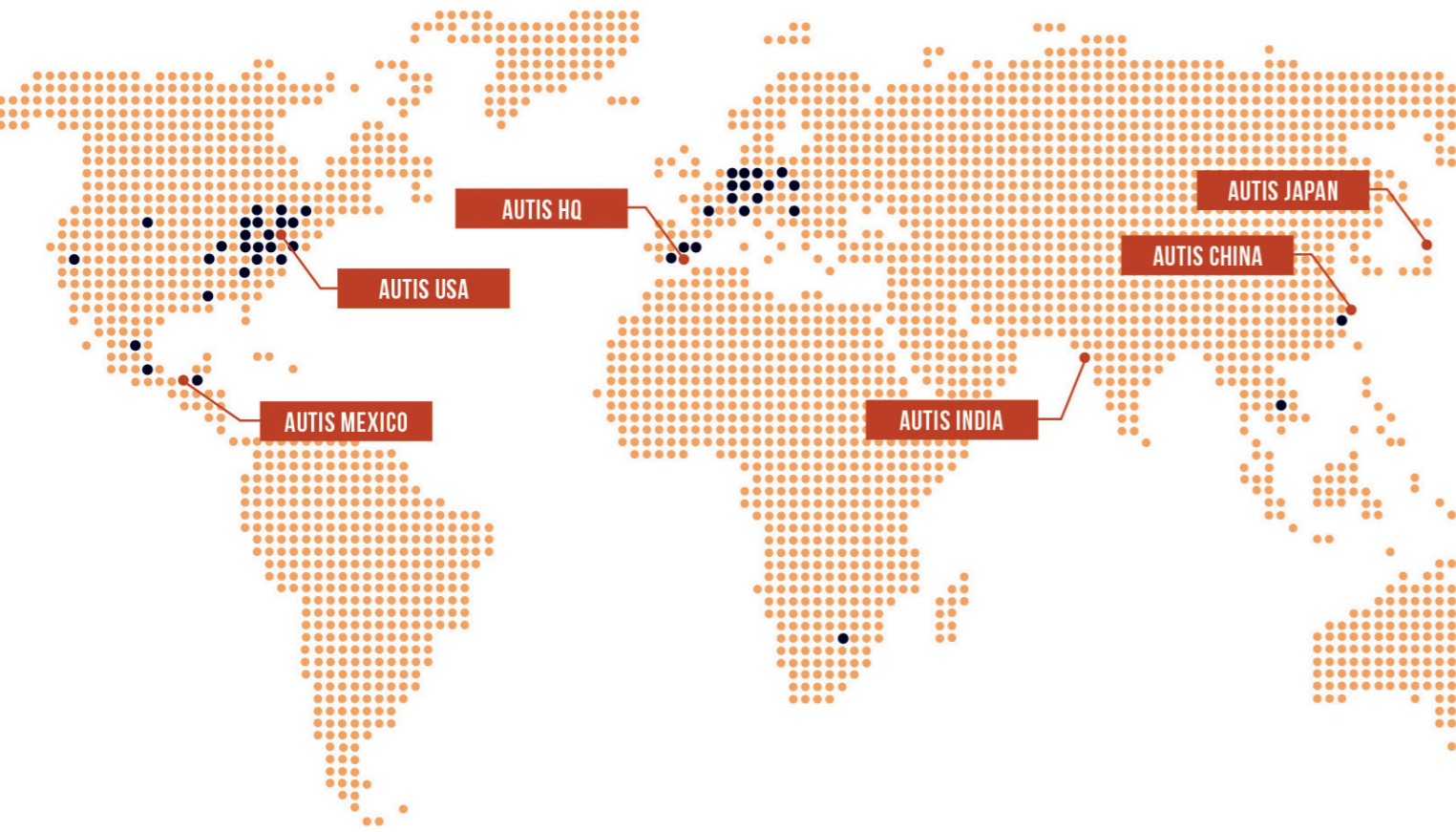


AUTOMATIC REPAIR

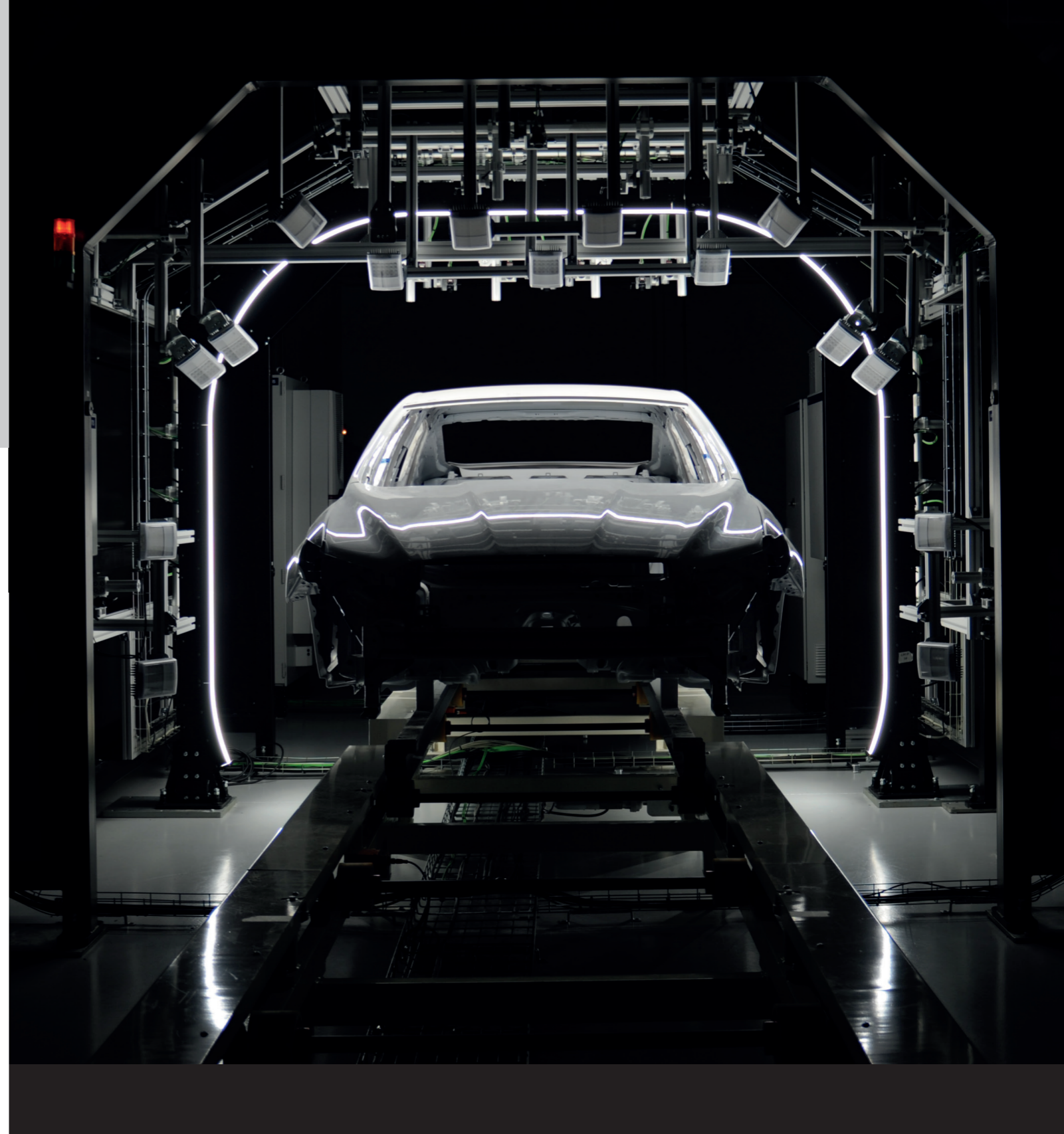


COLOR, APPEARANCE & THICKNESS MEASUREMENT

AUTIS AUTOMATED SYSTEMS FOR INSPECTION OF PAINTED SURFACES WORLDWIDE



autis@autis.com | www.autis.com



DYNAMIC PAINT INSPECTION AND CLASSIFICATION SYSTEM FOR E-COAT, PRIMER AND CLEAR COAT SURFACES



AUTIS INGENIEROS SLU | Avinguda d'Alacant, 125 · E46702 Gandia · Valencia (SPAIN) | Tel. +34 96 296 58 00
AUTIS ENGINEERING LLC | 150 Vester Ave. (Ste 202) · Ferndale, MI 48220 (USA) | Tel. +1 (248) 900 1201
AUTIS SHANGHAI | Unit K 05, 12/F, No. 33 Henan · Road (s), Huangpu District · Shanghai CHINA | Tel. +86 (21) 6337 5101



JUN2023



DYNAMIC PAINT INSPECTION AND CLASSIFICATION SYSTEM

The **Surface Verification System** is a hi-tech project developed by **AUTIS** as an industrial solution for the **detection and classification of defects** on e-coat, primer and clear coat surfaces.

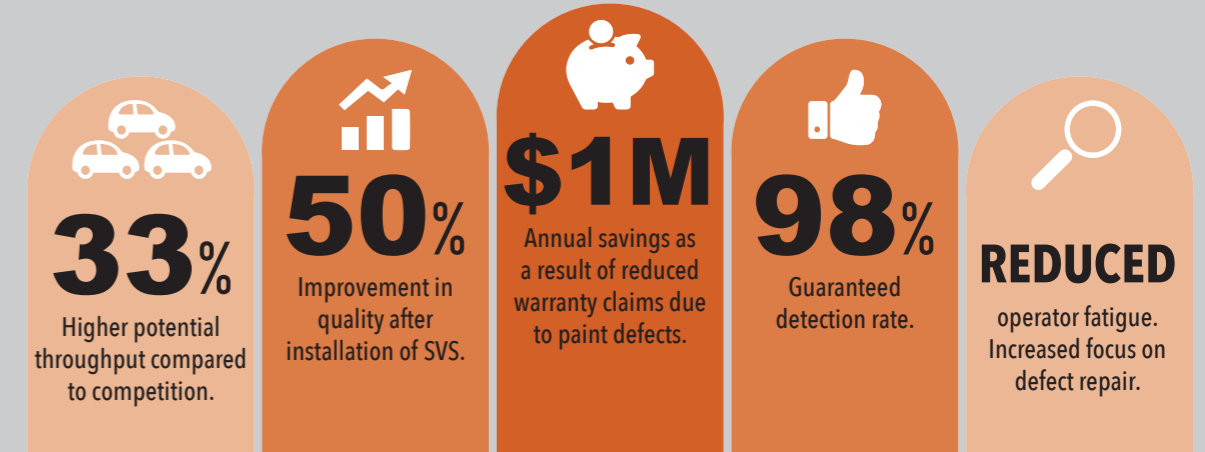
SVS processes images acquired from several high resolution cameras under a variety of lighting conditions to detect and classify defects while units are moving through the inspection station.

By applying the proper algorithms, **SVS is able to process the acquired images and detect a great variety of defects** including sealer, scratches, dirt, water drops, pops, boils, paint drops, human hair, etc. By means of advanced artificial intelligence techniques, **the system identifies and classifies the defects to facilitate their efficient repair.**



SVS BENEFITS

SVS helps companies in the automotive industry who want to **improve their paint quality processes** by increasing the accuracy of defect detection and classification by means of advanced computer vision and artificial intelligence technology.

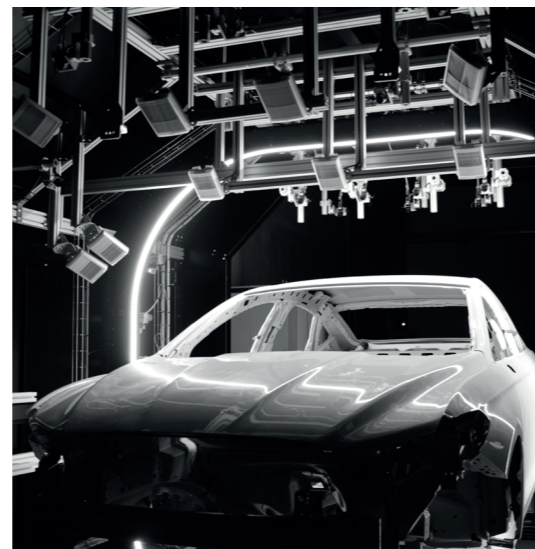


SVS FEATURES

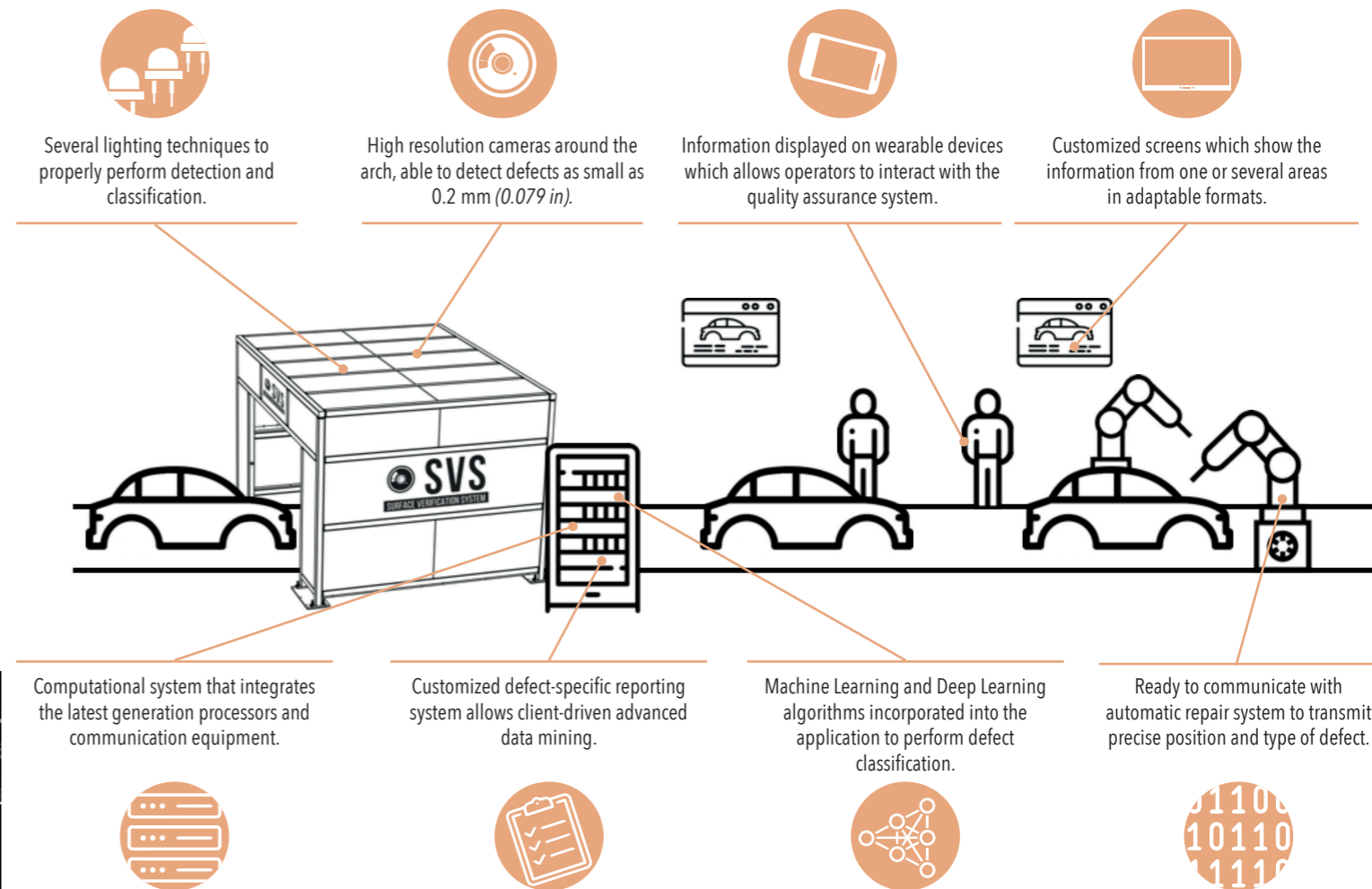
- 01** The use of dynamic technology removes the necessity for cars to stop in the inspection station, permitting **easier integration** in the production line without requiring conveyor modifications.
- 02** **SVS** is able to inspect **e-coat, primer and clear coat surfaces**. The design of each SVS inspection station takes into account the features of the surfaces on which the inspection is to be performed.




- 03** **SVS** is capable of **inspecting upto 98%** of the bodywork surface and is equipped with high resolution cameras able to detect **defects as small as 0.2 mm (0.079 in)**.
- 04** **SVS** inspection station is a **flexible system**, ready for future changes and new model retrofits enabling the installation of additional equipment.
- 05** **SVS** is a **"ready to repair"** solution, able to communicate with systems which automatically repair the defects previously detected by SVS during inspection.



SVS TECHNOLOGY





24/7 ONLINE SUPPORT AND MAINTENANCE SERVICE BY AUTIS SPECIALIST ENGINEERS

INTEGRATION IN PLANT QUALITY AND CONTROL SYSTEMS TO ALLOW CUSTOMERS TO VERIFY THE STATUS OF THE SVS SYSTEM

